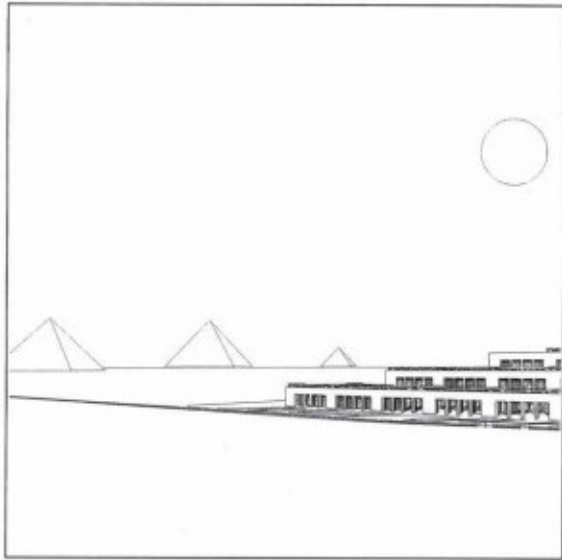


BIRD'S-EYE VIEW

13579OVA



# THE ARCHITECTURAL PROPOSAL



## 1. INSERTION IN THE SITE

Situated on the border of the Libyen Plateau, the proximity of the three great Pyramids of Gizeh and of the sphere of the sun, forbid all anecdote and impose horizontally and the right angle.

## 2. MONUMENTAL STAIRWAY

By a simple play of horizontal terraces, a stairway of monumental steps, the volume of the edifice is fitted into the cliffs of the plateau, so as to present an unique magisterial level on the horizon. This principle of roof terraces will permit outdoor exhibitions as well as the sky-lighting of the rooms that are situated beneath.

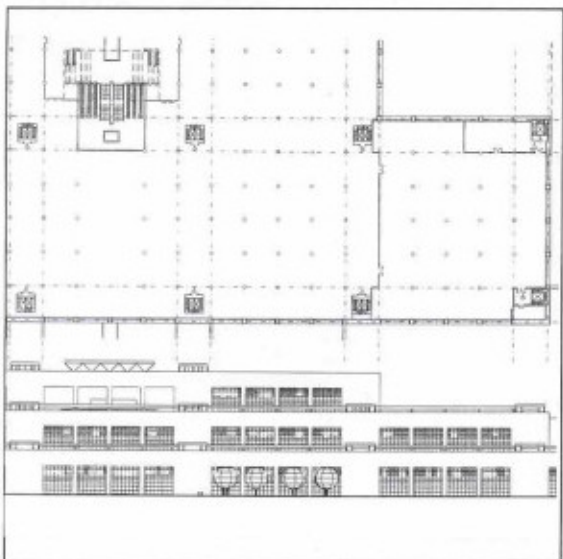
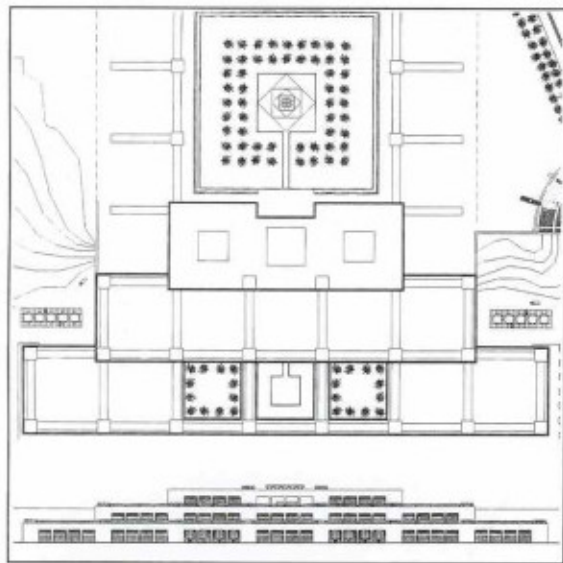
## 3. URBAN VISION

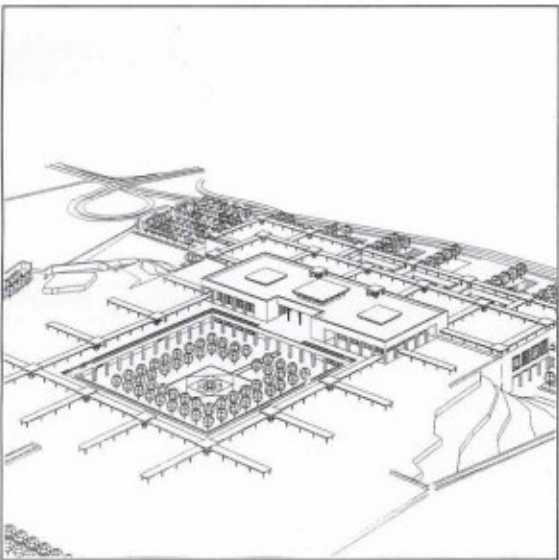
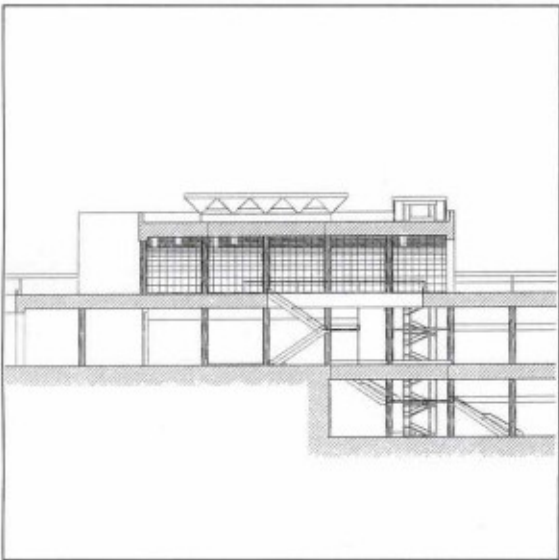
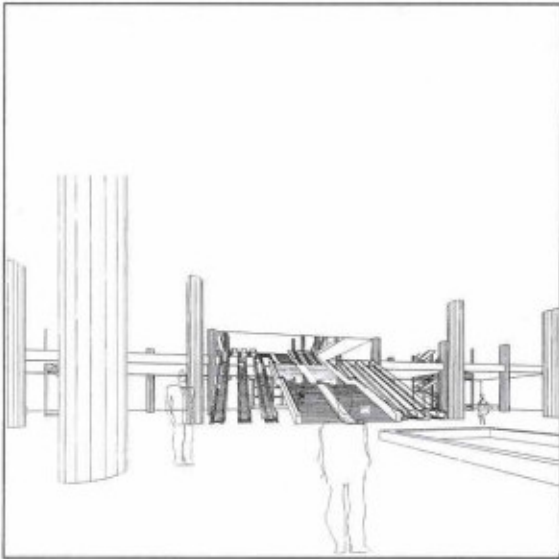
The Museum must be seen from far away, in the density of the new urban tissue, it must be visible from the city's skyscrapers. This greater vision implies a superior scale, a rhythm, a play of multiples, the repetition of simple parallelepiped modules, beyond the scale of local buildings.

## 4. ACCESS AND ORIENTATION

The access of visitor vehicles (bus and cars) and parking access, will be take place at the level of the alluvial plain (level 20) which will make possible it's arborization.

The Egyptian climate recommends shadow and the preference northern light : the principal facades of the steps are oriented to the North / Northeast. The visitors walk through out the Museum, along shaded porticoes. The terraces of the Exhibition Parks are equipped with pergolas.





## 5. INTERIOR DISTRIBUTION

The interior rooms on the three levels are distributed around a central axis. It is completed by vertical circulation (stairways and elevators) that structure and rejoin the three levels :

- 1<sup>st</sup> level : reception hall, congress rooms and cafeteria-restaurant,
- 2<sup>nd</sup> level : permanent museum and interior court (museum extension),
- 3<sup>rd</sup> level : special exhibitions and 1st class restaurant.

## 6. CONSTRUCTION SYSTEMS AND MATERIALS

On a grid of regularly distributed posts, is superposed a mesh of vertical and horizontal circulation, which constitute a functional and architectural module that when composed and repeated generates a Monumental Order beyond the urban scale.

- The façades will be covered with Tourah stone facing on concrete structure,
- The roof terraces will be treated with a double roofing complex on blocks (thermal insulation) and floating technical ceilings (with crawl-ways),
- The flooring will be in Assouan granit,
- The windows will be realized in aluminium.

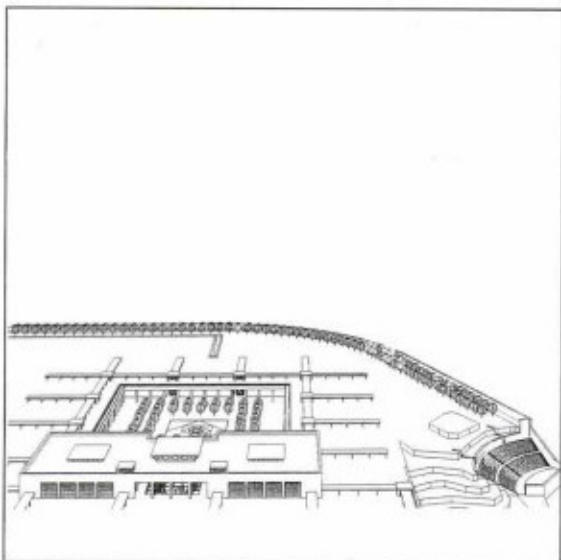
## 7. NILE PARK

The interior court and peristyle contain a water basin surrounded by potted palm trees, which symbolize the Nile, the water will flow along the principal axis to the main entry as a marker of the bountiful axis. Out of the basin emerges a Pyramidon (Benben) "initial hillock-order-issued from the first waters-chaos, symbol of civilization.

## 8. DUNAL PARK

The park is deployed along the plateau



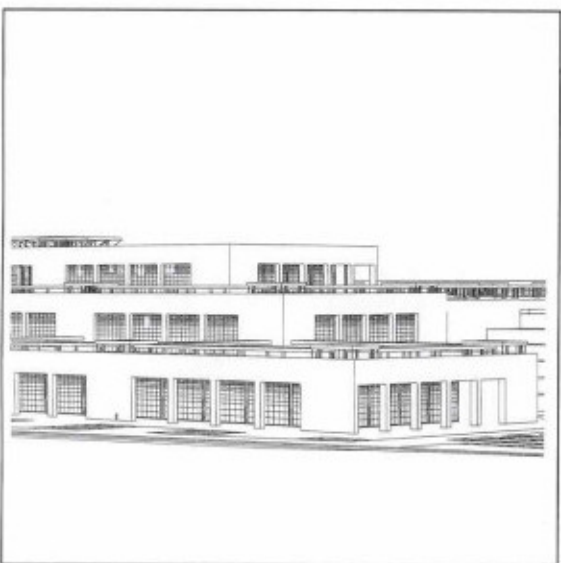


and the terraces. It is partially structured by the vertical circulation and the shaded passage-ways equipped with solar panels (energy recovery).

On the plateau, a reconstitution of habitations and technical animation will be proposed to visitors in relation with the Unesco.

## 9. EQUIPPED PARK

The cliff plateau will permit the inexpensive realization of an outdoor theatre for concerts nocturnal spectacles on big screens.

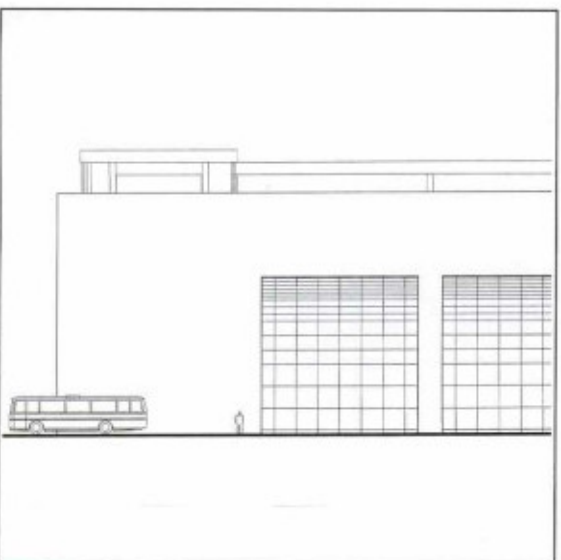


## 10. THEME PARK

The History of Egyptian Civilization will be played out along a chronological wall which will also serve as a visual and physical limit to the museum complex, screening the new urbanization to the West. It also concentrates the thoughts of the visitor on the vision of eternity offered by the view of the three Great Pyramids de Gizeh.

## 11. OPEN-AIR EXHIBITIONS

The play of terraces offers areas ideal for open-air exhibitions. These areas are in direct horizontal and vertical relationships with the interior spaces which are separated by shaded pergolas.



## 12. SERVICE AND SECURITY

Service and security access are provided in the back of the edifice. Access for the personnel is realized through lateral doors. The Museum complex is accessible to service and security vehicles by a distinct service road.

# THE CULTUREL MESSAGE

The cultural message of the GEM is that expressed by the evolution of Egyptian Civilization, from the dawn of humanity down to our own times.

The message is at once unique, grand and eternal.

## UNIQUE

Unique in it's essence, in it's continuance, in it's humanism.

- In it's essence : "Egypt is a gift of the Nile" so stated Herodotus, the "Father of History". A simple agricultural life regulated by the seasons and by the life bringing floodwaters of the Nile. A centralized power administering the land , guaranteeing the emergence of order over chaos.
- In it's continuance : 5,000 years of history, much longer if one considers pre-history, that has left us an exceptionally rich patrimony.
- In it's humanism : Egyptian religion sees death as a continuation of life as we know it, in a more pleasant form, just as the joys of life related by Egyptian relief sculpture.

## GRAND

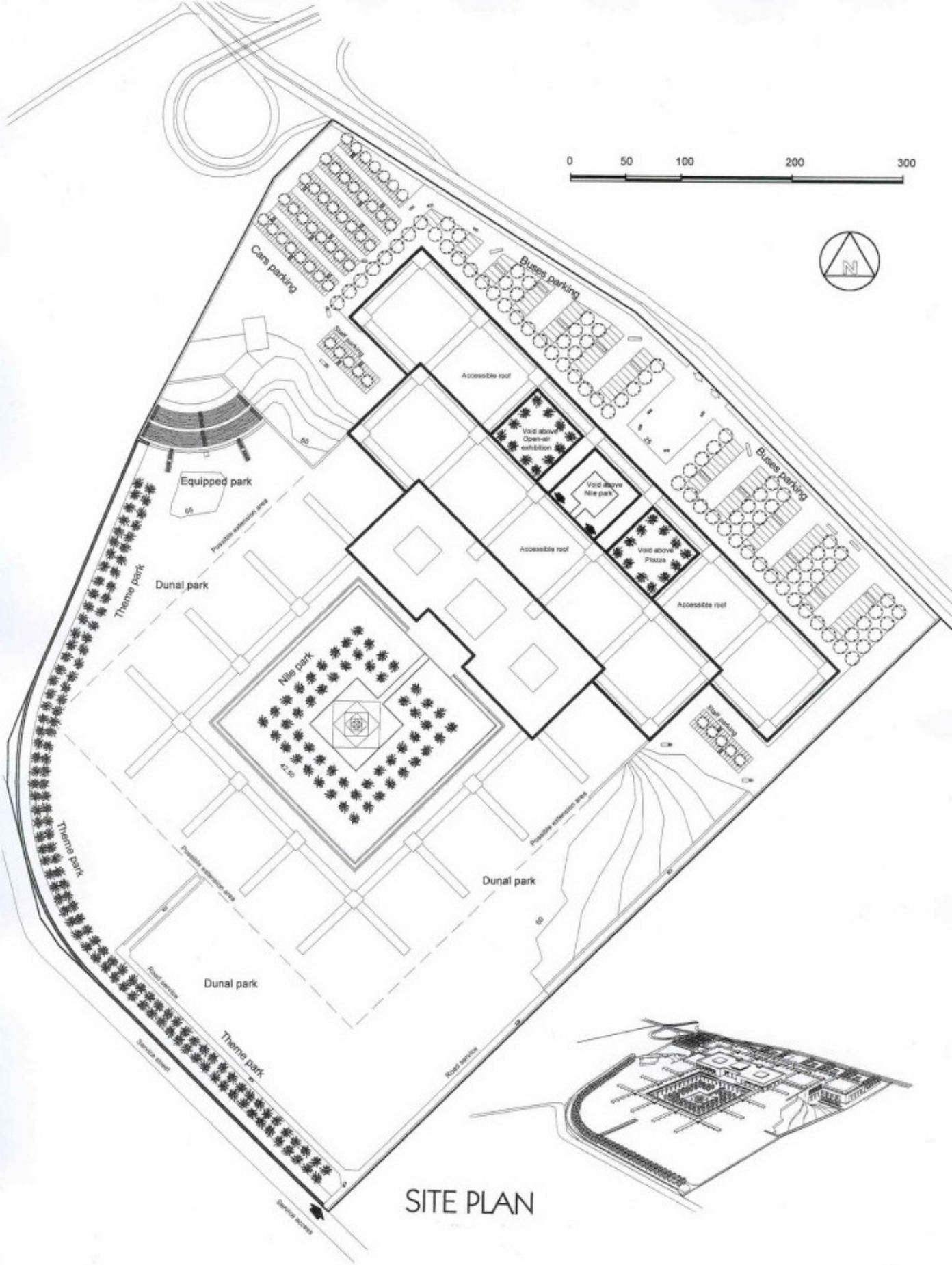
Grand, in spite of pillage, destruction, and spoliation. A part of this patrimony, dispersed among the "Egyptian departments" of the world's greatest museums, represents Egypt's greatest appeal. The Great Egyptian Museum will soon be at the head of this international network.

The architectural patrimony is tremendous, pyramids and temples, incomparable in the world, in space and in time.

## ETERNEL

"Their unchangeable masses have wearied time," said Delille, in speaking of the stone pyramids.

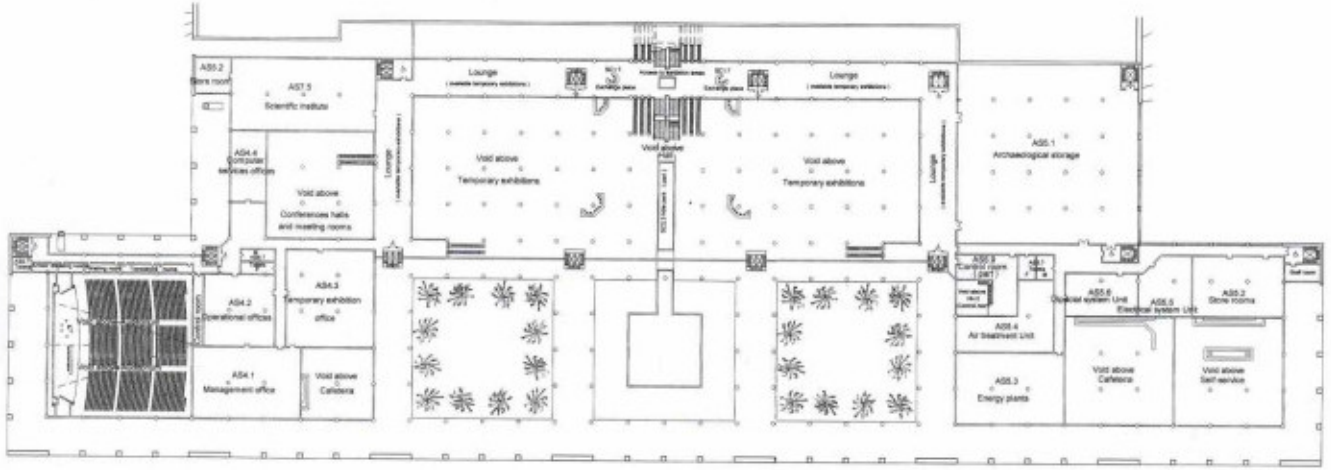
The eternity of death confronted with the brevity of life, a source of fascination to Man, the basis of the human condition.



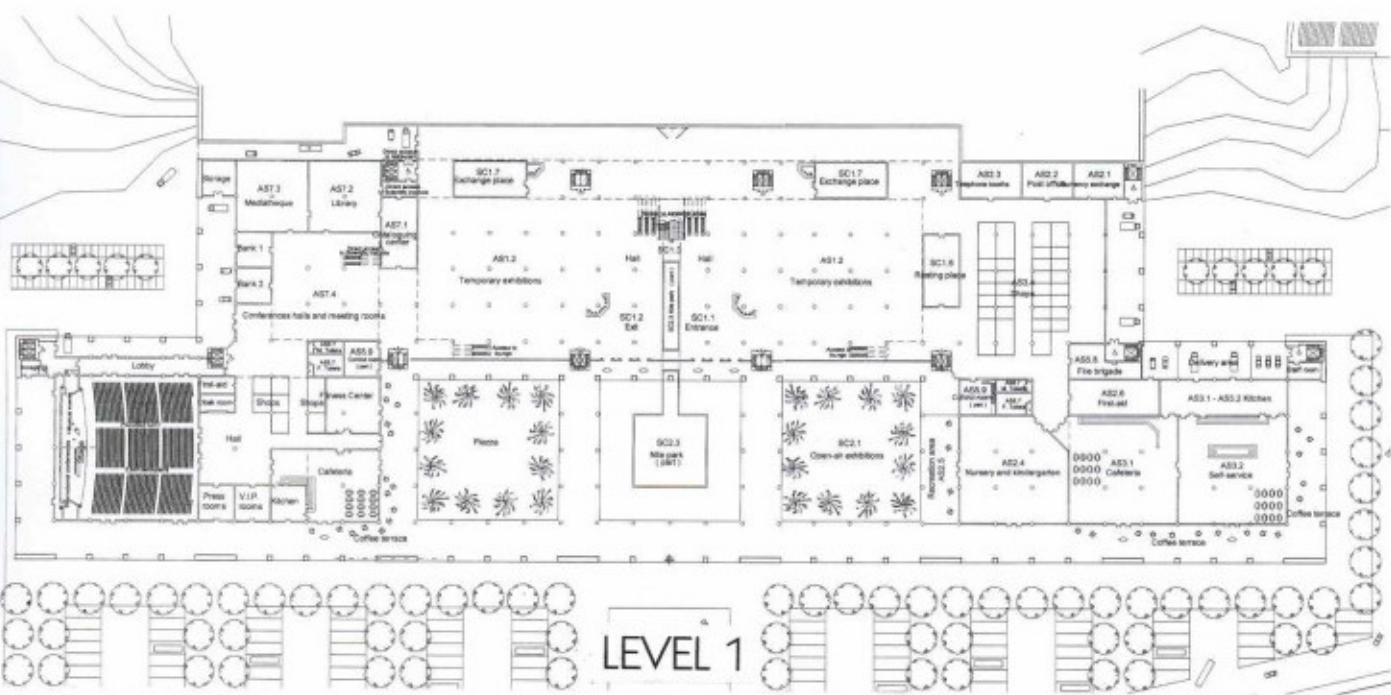
SITE PLAN

13579OVA

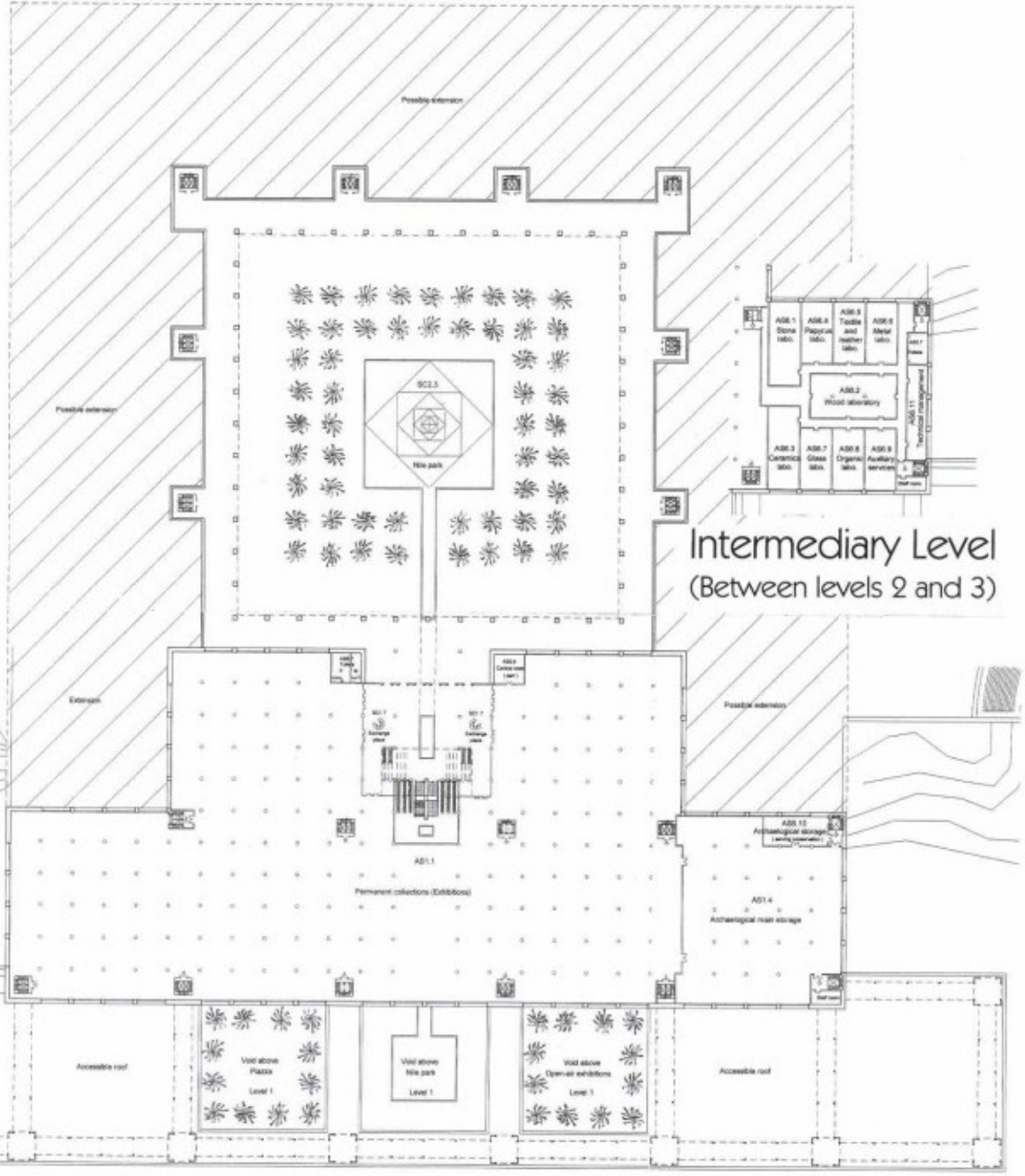




Intermediary Level  
(Between levels 1 and 2)



13579OVA



Intermediary Level  
(Between levels 2 and 3)

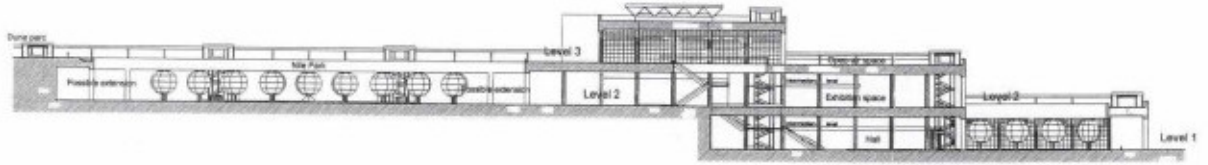
LEVEL 2

13579OVA





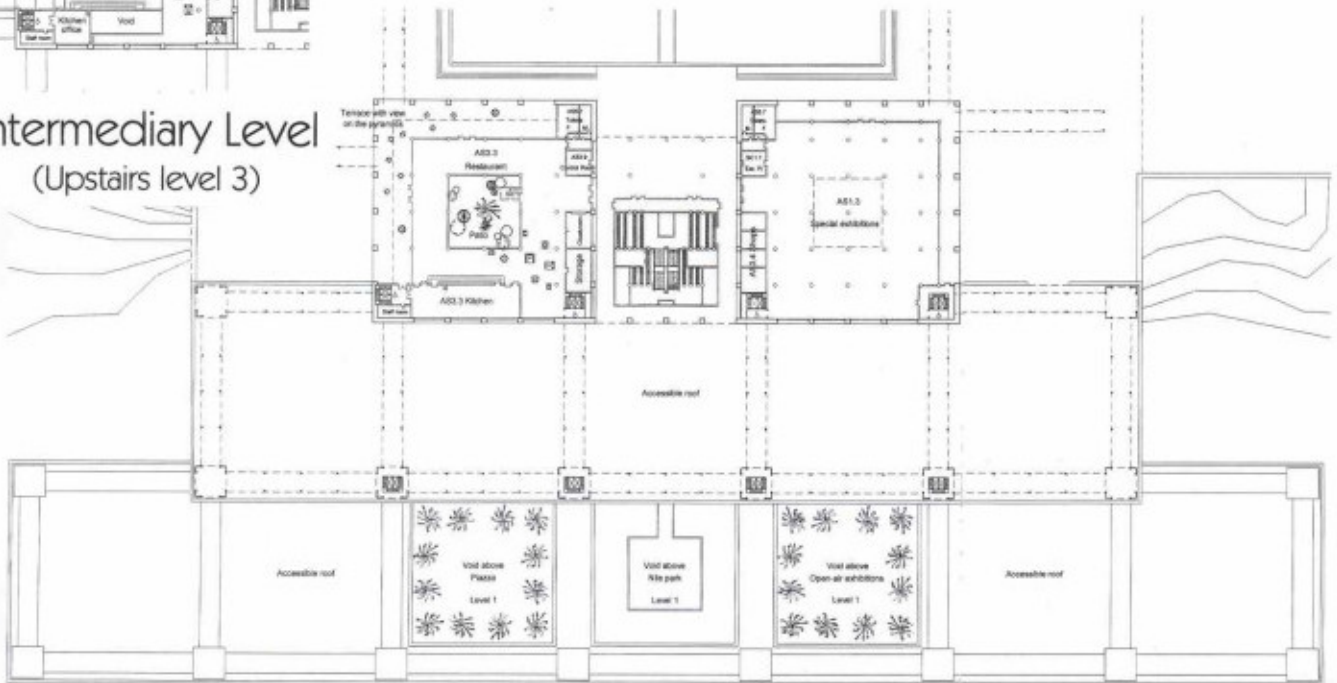
FRONT VIEW



TRANSVERSAL SECTION



Intermediary Level  
(Upstairs level 3)



LEVEL 3